



42-0

Nov 22 at 7:00PM

Batesville



Heritage Hills

Top Players	Home	1	2	3	4	F	Away	Bulldogs Top Players
#3 Goldsberry	229 Pass Yds	14	13	8	7	42	Rest of team	131 Pass Yds
#3 Goldsberry	81 Rush Yds	0	0	0	0	0	Rest of team	95 Rush Yds
#2 Meredith	113 Rec Yds						Rest of team	131 Rec Yds

Scoring Summary

Quarter	HHHS	BHS
First Quarter		
TD	Jett Goldsberry 15 Yd Run (Carter Payne Kick)	7 0
TD	Jett Goldsberry 40 Yd Run (Carter Payne Kick)	14 0
Second Quarter		
TD	Hunter Meredith 87 Yd Pass From Jett Goldsberry (Carter Payne Kick)	21 0
TD	Peyton Gray 37 Yd Pass From Jett Goldsberry (Carter Payne Kick No Good)	27 0
Third Quarter		
TD	Tyler Ruxer 43 Yd Pass From Jett Goldsberry (Two-Point Conversion)	35 0
Fourth Quarter		
TD	Alexander Smith 17 Yd Run (Carter Payne Kick)	42 0

Team Totals

Total Plays	33	54
Total Yards	385	226
Passing Yards	229	131
Rushing Yards	156	95
First Downs	15	14
Third Down Efficiency	4-5 (80%)	4-10 (40%)
Fourth Down Efficiency	0-1 (0%)	0-2 (0%)
Turnovers	1	1
Fumbles Lost	-	-
Interceptions Thrown	1	1
Penalties	1	2
Yards	-	20

Offense

Passing	Comp/Att	Yds	TD	Int	Long	2PT
#3 J. Goldsberry	9/9	229	3	-	87	-
#17 T. Winchell	0/2	-	-	1	-	-
Rushing	Att	Yds	TD	Long	Fum	2PT
#3 J. Goldsberry	8	81	2	40	-	-
#2 H. Meredith	6	29	-	12	-	-
#0 A. Smith	2	28	1	14	-	-
#8 T. Ruxer	1	12	-	12	-	-
#22 T. Willard	1	6	-	6	-	-
#16 A. James	1	1	-	-	-	-
#40 K. Pund	2	-	-	2	-	-
#12 A. Fischer	1	-1	-	-	-	-
Receiving	Rec	Yds	TD	Long	Fum	2PT
#2 H. Meredith	2	113	1	87	-	-
#1 P. Gray	3	56	1	37	-	-
#8 T. Ruxer	2	54	1	43	-	-
#17 T. Winchell	2	6	-	6	-	-

Passing	Comp/Att	Yds	TD	Int	Long	2PT
Rest of team	13/23	131	-	1	21	-
Rushing	Att	Yds	TD	Long	Fum	2PT
Rest of team	29	95	-	19	-	-
Receiving	Rec	Yds	TD	Long	Fum	2PT
Rest of team	13	131	-	21	-	-

Defense

	Tk	Ast	Sck	TFL	Sfty	Int	Fum	Blks	TD
#3 J. Goldsberry	6	2	-	2	-	-	-	-	-
#0 A. Smith	4	2	-	-	-	-	-	-	-
#2 H. Meredith	3	7	2	-	-	-	-	-	-
#8 T. Ruxer	3	-	-	-	-	-	-	-	-
#22 T. Willard	3	-	-	-	-	-	-	-	-
#24 D. Pledger	3	-	-	-	-	-	-	-	-

	Tk	Ast	Sck	TFL	Sfty	Int	Fum	Blks	TD
Rest of team	1	-	1	1	-	1	-	-	-

	Tk	Ast	Sck	TFL	Sfty	Int	Fum	Blks	TD
#50 P. Hart	3	4	-	-	-	-	-	-	-
#17 T. Winchell	2	1	-	-	-	-	-	-	-
#40 K. Pund	2	-	-	-	-	-	-	-	-
#15 A. Smith	2	1	-	-	-	-	-	-	-
#32 t. raven	2	3	-	-	-	-	-	-	-
#19 S. Raven	2	-	-	-	-	-	-	-	-
#68 J. Hockenberry	1	2	-	-	-	-	-	-	-
#67 T. Collins	1	-	-	-	-	-	-	-	-
#4 D. Kline	1	1	-	-	-	1	-	-	-
#25 A. Kolley	1	1	-	-	-	-	-	-	-
#52 H. Smith	-	2	-	-	-	-	-	-	-
#70 G. Jackson	-	3	-	-	-	-	-	-	-
#7 K. Frakes	-	1	-	-	-	-	-	-	-
#66 A. Braun	-	1	-	-	-	-	-	-	-

Special Teams

Kickoff Returns	Ret	Avg	TD	Long
#2 H. Meredith	1	20	-	20

Punt Returns	Ret	Avg	TD	Long
#17 T. Winchell	1	40	-	40
#8 T. Ruxer	1	19	-	-

Kicking	FG	% PAT	Pts
#23 C. Payne	-	-	4 4

Kickoff	Num	Yrds	Long	TB
#23 C. Payne	7	410	60	3

Kickoff Returns	Ret	Avg	TD	Long
Rest of team	5	0	-	-

Punt Returns	Ret	Avg	TD	Long
No Punt Returns				

Kicking	FG	% PAT	Pts
No Kicks			

Kickoff	Num	Yrds	Long	TB
Rest of team	1	-	-	-

Punting	Num	Avg	In 20	Long

Punting	Num	Avg	In	Long
Punting	Num	Avg	41	Long
			20	
No Punts				

Punting	Num	Avg	In	Long
			20	

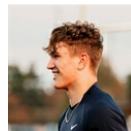
Rest of team **4 0 - -**

;

Total:	98	1,736	17.71	124.00	25	-
---------------	-----------	--------------	--------------	---------------	-----------	----------

Season Stats & Team Leaders for 14 out of 15 games

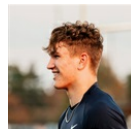
	HHS	OPP
Total yds	4,904	2,671
Passing yards	1,741	1,493
Passing yards per game	124.36	106.64
Pass completions/attempts	98 / 164	120 / 228
Pass completion %	59.76 %	52.63 %
Passing TDs	26	12
Rushing yards	3,163	1,178
Rushing yards per game	225.93	84.14
Rush plays/average	399 / 7.93	367 / 3.21
Rushing TDs	49	4
3rd Down Conversions	(39.78 %) 37	(28.39 %) 44
4th Down Conversions	(60.00 %) 18	(40.00 %) 12
First Downs	199	162
Turnovers	10	25
Sacks	23	2



PASSING

#3 J. Goldsberry

1736 yds, 97 for 158 (61.39 %), 26 TDs, 4 INTs



RUSHING

#3 J. Goldsberry

1499 yds, 137 carries, 25 TDs, 3 Fum



RECEIVING

#8 T. Ruxer

852 yds, 42 catches, 12 TDs



DEFENSE

#50 P. Hart

94 total tackles

Passing Stats

#	NAME	GAMES	CMP	ATT	CMP %	YDS	YDS/ATT	YDS/GAME	LNG	TD	INT	SACKED	RAT
3	J. Goldsberry	14	97	158	61.39 %	1,736	10.99	124.00	87	26	4	-	128
12	A. Fischer	12	1	2	50.00 %	5	2.50	0.42	5	-	-	-	0
17	T. Winchell	7	-	4	0.00 %	-	0.00	0.00	-	-	1	-	0
Total:		98	164	59.76 %	1,741	10.62	124.36	26	5	-	122		

Rushing Stats

#	NAME	GAMES	CARRIES	YDS	YDS/CARRY	YDS/GAME	LNG	TD	FUM
3	J. Goldsberry	14	137	1,499	10.94	107.07	89	25	3
2	H. Meredith	14	126	946	7.51	67.57	61	13	3
22	T. Willard	14	24	201	8.38	14.36	30	4	-
0	A. Smith	14	37	169	4.57	12.07	16	3	1
40	K. Pund	11	25	119	4.76	10.82	57	2	1
17	T. Winchell	7	10	101	10.10	14.43	33	1	-
16	A. James	8	14	47	3.36	5.88	9	-	-
12	A. Fischer	12	9	34	3.78	2.83	8	-	-
8	T. Ruxer	14	2	21	10.50	1.50	12	-	-
5	L. Hartwig	7	14	21	1.50	3.00	6	-	-
24	D. Pledger	13	1	5	5.00	0.38	5	1	-
Total:		399	3,163	7.93	225.93	49	8		

Receiving Stats

#	NAME	GAMES	REC	YDS	YDS/REC	YDS/GAME	LNG	TD	FUM
8	T. Ruxer	14	42	852	20.29	60.86	68	12	-
1	P. Gray	13	25	475	19.00	36.54	58	7	-
2	H. Meredith	14	12	254	21.17	18.14	87	4	-
24	D. Pledger	13	10	93	9.30	7.15	17	1	-
15	A. Smith	13	5	39	7.80	3.00	16	1	-
22	T. Willard	14	1	12	12.00	0.86	12	-	-
17	T. Winchell	7	2	6	3.00	0.86	6	-	-
36	H. Coop	10	1	5	5.00	0.50	5	-	-
Total:			98	1,736	17.71	124.00		25	-

Defensive Stats

#	NAME	GAMES	TACKLE	SOLO	ASSIST	SACK	TFL	SAFETY	INT	INT RET	YDS	FF	FUM REC	FUM RET	YDS	DEF TD
50	P. Hart	14	94	53	41	-	4	-	-	-	-	-	-	-	-	-
0	A. Smith	14	80	53	27	-	1	-	4	5	-	-	-	-	-	-
2	H. Meredith	14	61	37	24	4	3	-	1	15	1	-	-	-	-	-
7	K. Frakes	10	56	25	31	2	3	-	-	-	1	-	-	-	-	-
3	J. Goldsberry	14	50	33	17	3	6	-	1	38	1	-	-	-	-	-
22	T. Willard	14	48	30	18	2	7	-	-	-	-	1	-	-	-	-
4	D. Kline	11	41	17	24	1	-	-	1	10	-	-	-	-	-	-
52	H. Smith	12	39	23	16	3	6	-	-	-	1	-	-	-	-	-
15	A. Smith	13	27	11	16	-	-	-	5	88	-	3	-	-	1	-
32	t. raven	11	25	11	14	2	1	-	-	-	-	-	-	-	-	-
8	T. Ruxer	14	25	17	8	-	-	-	2	5	-	-	-	-	-	-
12	A. Fischer	12	25	17	8	1	3	-	1	-	-	1	-	-	-	-
24	D. Pledger	13	25	20	5	-	1	-	3	-	-	-	-	-	-	-
67	T. Collins	10	24	13	11	-	2	1	-	-	-	-	-	-	-	-
5	L. Hartwig	7	20	7	13	-	-	-	-	-	-	-	-	-	-	-
68	J. Hockenberry	9	17	7	10	-	2	1	-	-	-	-	-	-	-	-
36	H. Coop	10	15	8	7	4	1	-	-	-	-	-	-	-	-	-
64	J. Quinn	4	9	4	5	-	1	-	-	-	-	-	-	-	-	-
70	G. Jackson	4	9	4	5	-	1	-	-	-	-	-	-	-	-	-
17	T. Winchell	7	9	5	4	-	-	-	-	-	-	-	-	-	-	-
74	C. Kress	5	8	3	5	-	1	-	-	-	-	-	-	-	-	-
40	K. Pund	11	8	5	3	-	-	-	-	-	-	-	-	-	-	-
54	L. Fischer	3	7	4	3	-	1	-	-	-	-	-	-	-	-	-
16	A. James	8	7	5	2	-	-	-	-	-	1	-	-	-	-	-
66	A. Braun	5	6	2	4	-	-	-	-	-	-	-	-	-	-	-
60	A. Lyttle	4	5	1	4	-	-	-	-	-	-	-	-	-	-	-
14	N. Ludlow	3	4	4	-	-	-	-	-	-	-	-	-	-	-	-
25	A. Kolley	3	3	1	2	-	-	-	-	-	-	-	-	-	-	-
72	C. Lytle	2	3	2	1	-	-	-	-	-	-	-	-	-	-	-
59	J. Houchin	3	3	3	-	1	-	-	-	-	-	-	-	-	-	-
19	S. Raven	2	3	3	-	-	-	-	-	-	-	-	-	-	-	-
Total:			772	437	335	23	44	2	18	161	5	5		-	1	

#	NAME	GAMES	TACKLE	SOLO	ASSIST	SACK	TFL	SAFETY	INT	INT RET	YDS	FF	FUM REC	FUM RET	YDS	DEF TD
76	P. Martin	1	2	-	2	-	-	-	-	-	-	-	-	-	-	-
79	C. Webb	2	2	-	2	-	-	-	-	-	-	-	-	-	-	-
65	K. Taylor	2	2	1	1	-	-	-	-	-	-	-	-	-	-	-
55	C. Scherer	2	2	1	1	-	-	-	-	-	-	-	-	-	-	-
23	C. Payne	14	2	2	-	-	-	-	-	-	-	-	-	-	-	-
9	J. Duttlinger	1	2	2	-	-	-	-	-	-	-	-	-	-	-	-
59	J. Houchin	1	1	-	1	-	-	-	-	-	-	-	-	-	-	-
1	P. Gray	13	1	1	-	-	-	-	-	-	-	-	-	-	-	-
20	J. Gramelspacher	1	1	1	-	-	-	-	-	-	-	-	-	-	-	-
18	A. Brockman	1	1	1	-	-	-	-	-	-	-	-	-	-	-	-
Total:			772	437	335	23	44	2	18		161	5	5		-	1

Kicking Stats

#	NAME	GAMES	FGM/FGA	FG %	LNG	XPM/XPA	XP %	PTS
23	C. Payne	14	2 / 3	66.67 %	31	62 / 66	93.94 %	68
7	K. Frakes	10	- / -	-	-	3 / 3	100.00 %	3
6	H. Lytton	7	- / -	-	-	2 / 2	100.00 %	2
Total:			2 / 3	66.67 %		67 / 71	94.37 %	73

Punting Stats

#	NAME	GAMES	PUNTS	YDS	YDS/PUNT	YDS/GAME	IN 20	LNG
3	J. Goldsberry	14	17	652	38.35	46.57	7	58
7	K. Frakes	10	2	86	43.00	8.60	1	52
12	A. Fischer	12	2	57	28.50	4.75	1	31
Total:			21	795	37.86	56.79	9	

Kickoff Return Stats

#	NAME	GAMES	RETURNS	YDS	YDS/RETURN	YDS/GAME	TD	LNG
0	A. Smith	14	9	156	17.33	11.14	-	29
2	H. Meredith	14	6	137	22.83	9.79	-	54
17	T. Winchell	7	3	58	19.33	8.29	-	30
3	J. Goldsberry	14	2	54	27.00	3.86	-	31
40	K. Pund	11	2	38	19.00	3.45	-	25
25	A. Kolley	3	1	23	23.00	7.67	-	23
12	A. Fischer	12	1	11	11.00	0.92	-	11
1	P. Gray	13	2	10	5.00	0.77	-	8
Total:			26	487	18.73	34.79	-	

Punt Return Stats

#	NAME	GAMES	RETURNS	YDS	YDS/RETURN	YDS/GAME	TD	LNG
17	T. Winchell	7	15	221	14.73	31.57	1	40
Total:			36	315	8.75	22.50	1	

#	NAME	GAMES	RETURNS	YDS	YDS/RETURN	YDS/GAME	TD	LNG
0	A. Smith	14	8	36	4.50	2.57	-	18
8	T. Ruxer	14	5	30	6.00	2.14	-	10
1	P. Gray	13	7	28	4.00	2.15	-	20
2	H. Meredith	14	1	-	0.00	0.00	-	-
Total:			36	315	8.75	22.50	1	