



50-7

Nov 15 at 6:20PM



Heritage Hills

North Harrison

Top Players		Home	1	2	3	4	F	Away	Top Players
#3 Goldsberry	96 Pass Yds	22	21	7	0	50		Rest of team	50 Pass Yds
#2 Meredith	73 Rush Yds	0	0	0	7	7		Rest of team	147 Rush Yds
#1 Gray	49 Rec Yds							Rest of team	50 Rec Yds

Scoring Summary

First Quarter		HHHS	NHHS
	TD Jett Goldsberry 67 Yd Run (Two-Point Conversion)	8	0
	TD Hunter Meredith 8 Yd Run (Carter Payne Kick)	15	0
	TD Peyton Gray 34 Yd Pass From Jett Goldsberry (Carter Payne Kick)	22	0
Second Quarter		HHHS	NHHS
	TD Tyler Ruxer 47 Yd Pass From Jett Goldsberry (Carter Payne Kick)	29	0
	TD Hunter Meredith 23 Yd Run (Carter Payne Kick)	36	0
	TD Andersen Smith 35 Yd Interception Return (Carter Payne Kick)	43	0
Third Quarter		HHHS	NHHS
	TD Tyce Winchell 44 Yd Punt Return (Carter Payne Kick)	50	0
Fourth Quarter		HHHS	NHHS

Team Totals

Total Plays	22	52
Total Yards	267	197
Passing Yards	96	50
Rushing Yards	171	147
First Downs	9	11
Third Down Efficiency	1-3 (33%)	2-10 (20%)
Fourth Down Efficiency	0-1 (0%)	1-3 (33%)
Turnovers	-	1
Fumbles Lost	-	-
Interceptions Thrown	-	1
Penalties	1	4
Yards	10	42



TD

5 Yd Run (Kick) 50 7

Offense

Passing	Comp/Att	Yds	TD	Int	Long	2PT
#3 J. Goldsberry	3/5	96	2	-	47	-
Rushing	Att	Yds	TD	Long	Fum	2PT
#2 H. Meredith	5	73	2	23	-	-
#3 J. Goldsberry	1	67	1	67	-	-
#40 K. Pund	4	23	-	17	-	-
#12 A. Fischer	2	8	-	4	-	-
#22 T. Willard	2	8	-	6	-	-
#5 L. Hartwig	1	-1	-	-	-	-
#17 T. Winchell	1	-7	-	-	-	-
Receiving	Rec	Yds	TD	Long	Fum	2PT
#1 P. Gray	2	49	1	34	-	-
#8 T. Ruxer	1	47	1	47	-	-

Passing	Comp/Att	Yds	TD	Int	Long	2PT
Rest of team	2/8	50	-	1	40	-
Rushing	Att	Yds	TD	Long	Fum	2PT
Rest of team	40	147	1	14	-	-
Receiving	Rec	Yds	TD	Long	Fum	2PT
Rest of team	2	50	-	40	-	-

Defense

	Tk	Ast	Sck	TFL	Sfty	Int	Fum	Blks	TD
#2 H. Meredith	5	2	-	-	-	-	-	-	-
#52 H. Smith	5	2	1	3	-	-	-	-	-
#0 A. Smith	3	2	-	-	-	-	-	-	-
#70 G. Jackson	3	1	-	1	-	-	-	-	-
#22 T. Willard	2	2	-	2	-	-	-	-	-

Tk	Ast	Sck	TFL	Sfty	Int	Fum	Blks	TD
----	-----	-----	-----	------	-----	-----	------	----

	Tk	Ast	Sck	TFL	Sfty	Int	Fum	Blks	TD
#54 L. Fischer	2	1	-	-	-	-	-	-	-
#4 D. Kline	2	2	-	-	-	-	-	-	-
#72 C. Lytle	2	-	-	-	-	-	-	-	-
#9 J. Duttlinger	2	-	-	-	-	-	-	-	-
#12 A. Fischer	1	2	-	-	-	-	-	-	-
#5 L. Hartwig	1	3	-	-	-	-	-	-	-
#50 P. Hart	1	3	-	-	-	-	-	-	-
#24 D. Pledger	1	2	-	-	-	-	-	-	-
#64 J. Quinn	1	3	-	-	-	-	-	-	-
#18 A. Brockman	1	-	-	-	-	-	-	-	-
#17 T. Winchell	-	2	-	-	-	-	-	-	-
#15 A. Smith	-	4	-	-	-	1	-	-	1
#68 J. Hockenberry	-	1	-	-	-	-	-	-	-
#67 T. Collins	-	1	-	-	-	-	-	-	-
#36 H. Coop	-	3	-	-	-	-	-	-	-
#66 A. Braun	-	2	-	-	-	-	-	-	-
#74 C. Kress	-	2	-	-	-	-	-	-	-

Special Teams

Kickoff Returns	Ret	Avg	TD	Long
#25 A. Kolley	1	23	-	23
#1 P. Gray	1	2	-	2

Punt Returns	Ret	Avg	TD	Long
#17 T. Winchell	3	32	1	-
#0 A. Smith	1	3	-	-

Kickoff Returns	Ret	Avg	TD	Long
Rest of team	3	0	-	-

Punt Returns	Ret	Avg	TD	Long
No Punt Returns				

Kicking	FG	%	PAT	Pts
Rest of team	-	-	1	1

Kicking	FG	%	PAT	Pts
Kicking	FG	%	PAT	Pts
#23 C. Payne	0	0.0	6	6
		%		

Kickoff	Num	Yrds	Long	TB
#23 C. Payne	7	408	60	4
#6 H. Lytton	1	60	60	1

Punting	Num	Avg	In 20	Long
No Punts				

Kickoff	Num	Yrds	Long	TB
Kickoff	Num	Yrds	Long	TB
Rest of team	2	-	-	-

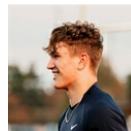
Punting	Num	Avg	In 20	Long
Rest of team	4	0	-	-

;

Total:	89	1,507	16.93	115.92	22	-
---------------	-----------	--------------	--------------	---------------	-----------	----------

Season Stats & Team Leaders for 13 out of 14 games

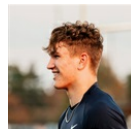
	HHS	OPP
Total yds	4,519	2,445
Passing yards	1,512	1,362
Passing yards per game	116.31	104.77
Pass completions/attempts	89 / 153	107 / 205
Pass completion %	58.17 %	52.20 %
Passing TDs	23	12
Rushing yards	3,007	1,083
Rushing yards per game	231.31	83.31
Rush plays/average	377 / 7.98	338 / 3.20
Rushing TDs	46	4
3rd Down Conversions	(37.50 %) 33	(27.59 %) 40
4th Down Conversions	(62.07 %) 18	(42.86 %) 12
First Downs	184	148
Turnovers	9	24
Sacks	21	1



PASSING

#3 J. Goldsberry

1507 yds, 88 for 149 (59.06 %), 23 TDs, 4 INTs



RUSHING

#3 J. Goldsberry

1418 yds, 129 carries, 23 TDs, 3 Fum



RECEIVING

#8 T. Ruxer

798 yds, 40 catches, 11 TDs



DEFENSE

#50 P. Hart

87 total tackles

Passing Stats

#	NAME	GAMES	CMP	ATT	CMP %	YDS	YDS/ATT	YDS/GAME	LNG	TD	INT	SACKED	RAT
3	J. Goldsberry	13	88	149	59.06 %	1,507	10.11	115.92	68	23	4	-	121
12	A. Fischer	11	1	2	50.00 %	5	2.50	0.45	5	-	-	-	0
17	T. Winchell	6	-	2	0.00 %	-	0.00	0.00	-	-	-	-	0
Total:		89	153	58.17 %	1,512	9.88	116.31	23	4	-	120		

Rushing Stats

#	NAME	GAMES	CARRIES	YDS	YDS/CARRY	YDS/GAME	LNG	TD	FUM
3	J. Goldsberry	13	129	1,418	10.99	109.08	89	23	3
2	H. Meredith	13	120	917	7.64	70.54	61	13	3
22	T. Willard	13	23	195	8.48	15.00	30	4	-
0	A. Smith	13	35	141	4.03	10.85	16	2	1
40	K. Pund	10	23	119	5.17	11.90	57	2	1
17	T. Winchell	6	10	101	10.10	16.83	33	1	-
16	A. James	7	13	46	3.54	6.57	9	-	-
12	A. Fischer	11	8	35	4.38	3.18	8	-	-
5	L. Hartwig	7	14	21	1.50	3.00	6	-	-
8	T. Ruxer	13	1	9	9.00	0.69	9	-	-
24	D. Pledger	12	1	5	5.00	0.42	5	1	-
Total:		377	3,007	7.98	231.31	46	8		

Receiving Stats

#	NAME	GAMES	REC	YDS	YDS/REC	YDS/GAME	LNG	TD	FUM
8	T. Ruxer	13	40	798	19.95	61.38	68	11	-
1	P. Gray	12	22	419	19.05	34.92	58	6	-
2	H. Meredith	13	10	141	14.10	10.85	54	3	-
24	D. Pledger	12	10	93	9.30	7.75	17	1	-
15	A. Smith	12	5	39	7.80	3.25	16	1	-
22	T. Willard	13	1	12	12.00	0.92	12	-	-
36	H. Coop	10	1	5	5.00	0.50	5	-	-
Total:			89	1,507	16.93	115.92		22	-

Defensive Stats

#	NAME	GAMES	TACKLE	SOLO	ASSIST	SACK	TFL	SAFETY	INT	INT RET	YDS	FF	FUM REC	FUM RET	YDS	DEF TD
50	P. Hart	13	87	50	37	-	4	-	-	-	-	-	-	-	-	-
0	A. Smith	13	74	49	25	-	1	-	4	-	5	-	-	-	-	-
7	K. Frakes	9	55	25	30	2	3	-	-	-	1	-	-	-	-	-
2	H. Meredith	13	51	34	17	2	3	-	1	-	15	1	-	-	-	-
22	T. Willard	13	45	27	18	2	7	-	-	-	-	-	1	-	-	-
3	J. Goldsberry	13	42	27	15	3	4	-	1	-	38	1	-	-	-	-
4	D. Kline	10	39	16	23	1	-	-	-	-	-	-	-	-	-	-
52	H. Smith	11	37	23	14	3	6	-	-	-	1	-	-	-	-	-
12	A. Fischer	11	25	17	8	1	3	-	1	-	-	-	1	-	-	-
15	A. Smith	12	24	9	15	-	-	-	5	-	88	-	3	-	-	1
67	T. Collins	9	23	12	11	-	2	1	-	-	-	-	-	-	-	-
8	T. Ruxer	13	22	14	8	-	-	-	2	-	5	-	-	-	-	-
24	D. Pledger	12	22	17	5	-	1	-	3	-	-	-	-	-	-	-
5	L. Hartwig	7	20	7	13	-	-	-	-	-	-	-	-	-	-	-
32	t. raven	10	20	9	11	2	1	-	-	-	-	-	-	-	-	-
36	H. Coop	10	15	8	7	4	1	-	-	-	-	-	-	-	-	-
68	J. Hockenberry	8	14	6	8	-	2	1	-	-	-	-	-	-	-	-
64	J. Quinn	4	9	4	5	-	1	-	-	-	-	-	-	-	-	-
74	C. Kress	5	8	3	5	-	1	-	-	-	-	-	-	-	-	-
54	L. Fischer	3	7	4	3	-	1	-	-	-	-	-	-	-	-	-
16	A. James	7	7	5	2	-	-	-	-	-	1	-	-	-	-	-
40	K. Pund	10	6	3	3	-	-	-	-	-	-	-	-	-	-	-
17	T. Winchell	6	6	3	3	-	-	-	-	-	-	-	-	-	-	-
70	G. Jackson	3	6	4	2	-	1	-	-	-	-	-	-	-	-	-
60	A. Lyttle	4	5	1	4	-	-	-	-	-	-	-	-	-	-	-
66	A. Braun	4	5	2	3	-	-	-	-	-	-	-	-	-	-	-
14	N. Ludlow	3	4	4	-	-	-	-	-	-	-	-	-	-	-	-
72	C. Lytle	2	3	2	1	-	-	-	-	-	-	-	-	-	-	-
59	J. Houchin	3	3	3	-	1	-	-	-	-	-	-	-	-	-	-
76	P. Martin	1	2	-	2	-	-	-	-	-	-	-	-	-	-	-
79	C. Webb	2	2	-	2	-	-	-	-	-	-	-	-	-	-	-
65	K. Taylor	2	2	1	1	-	-	-	-	-	-	-	-	-	-	-
Total:			702	398	304	21	42	2	17		151	5	5		-	1

#	NAME	GAMES	TACKLE	SOLO	ASSIST	SACK	TFL	SAFETY	INT	INT RET	YDS	FF	FUM REC	FUM RET	YDS	DEF TD
55	C. Scherer	2	2	1	1	-	-	-	-	-	-	-	-	-	-	-
23	C. Payne	13	2	2	-	-	-	-	-	-	-	-	-	-	-	-
9	J. Duttlinger	1	2	2	-	-	-	-	-	-	-	-	-	-	-	-
59	J. Houchin	1	1	-	1	-	-	-	-	-	-	-	-	-	-	-
25	A. Kolley	2	1	-	1	-	-	-	-	-	-	-	-	-	-	-
1	P. Gray	12	1	1	-	-	-	-	-	-	-	-	-	-	-	-
20	J. Gramelspacher	1	1	1	-	-	-	-	-	-	-	-	-	-	-	-
19	S. Raven	1	1	1	-	-	-	-	-	-	-	-	-	-	-	-
18	A. Brockman	1	1	1	-	-	-	-	-	-	-	-	-	-	-	-
Total:			702	398	304	21	42	2	17		151	5	5		-	1

Kicking Stats

#	NAME	GAMES	FGM/FGA	FG %	LNG	XPM/XPA	XP %	PTS
23	C. Payne	13	2 / 3	66.67 %	31	58 / 61	95.08 %	64
7	K. Frakes	9	- / -	-	-	3 / 3	100.00 %	3
6	H. Lytton	7	- / -	-	-	2 / 2	100.00 %	2
Total:			2 / 3	66.67 %		63 / 66	95.45 %	69

Punting Stats

#	NAME	GAMES	PUNTS	YDS	YDS/PUNT	YDS/GAME	IN 20	LNG
3	J. Goldsberry	13	17	652	38.35	50.15	7	58
7	K. Frakes	9	2	86	43.00	9.56	1	52
12	A. Fischer	11	2	57	28.50	5.18	1	31
Total:			21	795	37.86	61.15	9	

Kickoff Return Stats

#	NAME	GAMES	RETURNS	YDS	YDS/RETURN	YDS/GAME	TD	LNG
0	A. Smith	13	9	156	17.33	12.00	-	29
2	H. Meredith	13	5	117	23.40	9.00	-	54
17	T. Winchell	6	3	58	19.33	9.67	-	30
3	J. Goldsberry	13	2	54	27.00	4.15	-	31
40	K. Pund	10	2	38	19.00	3.80	-	25
25	A. Kolley	2	1	23	23.00	11.50	-	23
12	A. Fischer	11	1	11	11.00	1.00	-	11
1	P. Gray	12	2	10	5.00	0.83	-	8
Total:			25	467	18.68	35.92	-	

Punt Return Stats

#	NAME	GAMES	RETURNS	YDS	YDS/RETURN	YDS/GAME	TD	LNG
17	T. Winchell	6	14	181	12.93	30.17	1	21
0	A. Smith	13	8	36	4.50	2.77	-	18
Total:			34	256	7.53	19.69	1	

#	NAME	GAMES	RETURNS	YDS	YDS/RETURN	YDS/GAME	TD	LNG
1	P. Gray	12	7	28	4.00	2.33	-	20
8	T. Ruxer	13	4	11	2.75	0.85	-	10
2	H. Meredith	13	1	-	0.00	0.00	-	-
Total:			34	256	7.53	19.69	1	